

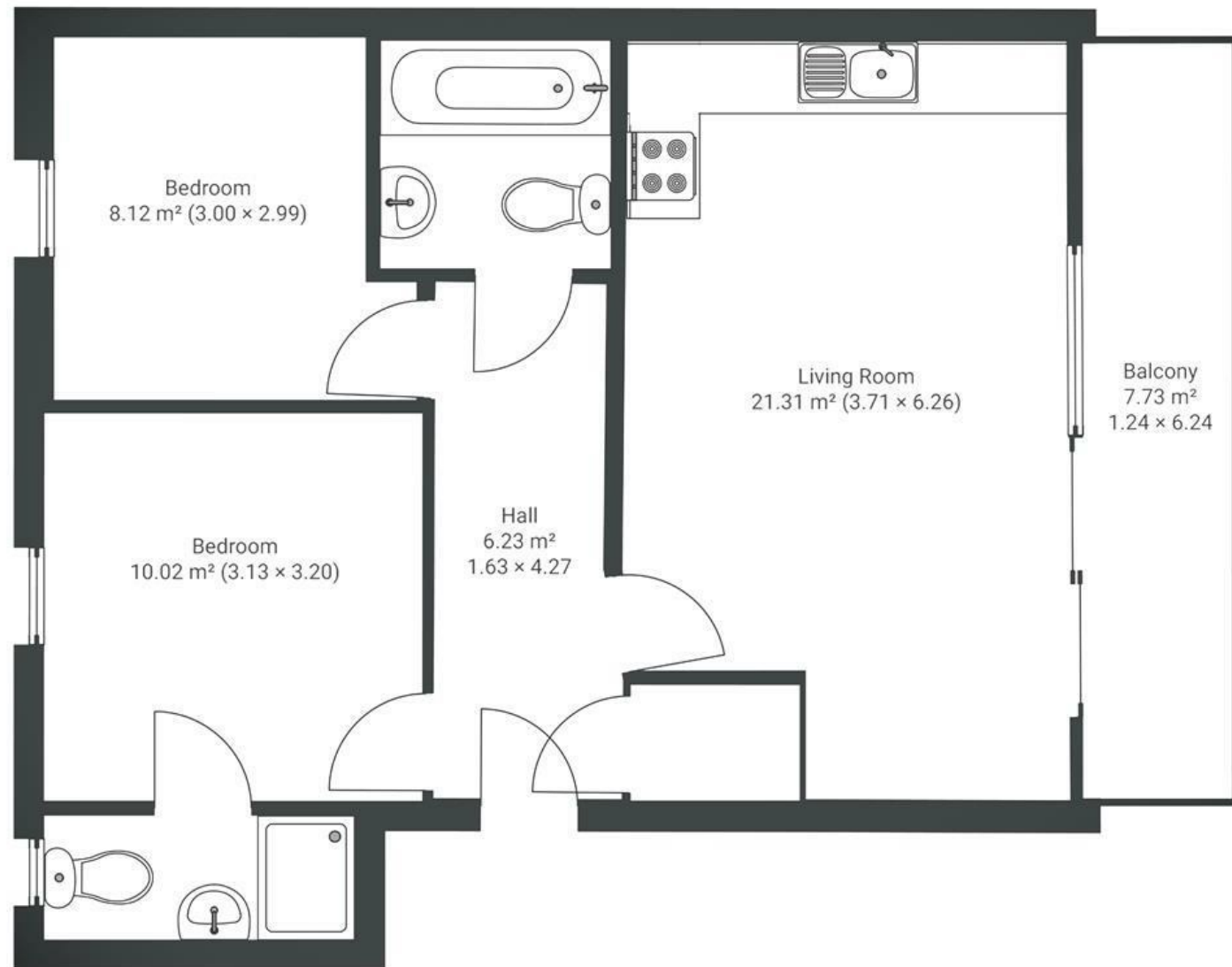
Weavers Mill Close

ARNOS VALE

APPROXIMATE FLOOR AREA
53.2 SQM / 572 SQFT



3rd Floor



Boardwalk

Weavers Mill

, BRISTOL

£

£250,000

zzz

2 Bedrooms



Bristol, BS5

8FH



2 Bathrooms

"I have loved the incredible views across the city and to the surrounding hills from the main living area. The sense of height and light you get creates such a calm space and it's so nice to sit out and enjoy breakfast on the balcony. I also had my first go at growing some plants outside as the south-facing orientation gives them all the sun needs to flourish. St George is such a fantastic place to live, you are so near to great pubs, shops, cafes and all major supermarkets as well as great access to green spaces at Troopers Hill, Conham river park, St George's Park, and St Anne's woods; we have spent plenty of weekends enjoying the local walks and the cycle path."

